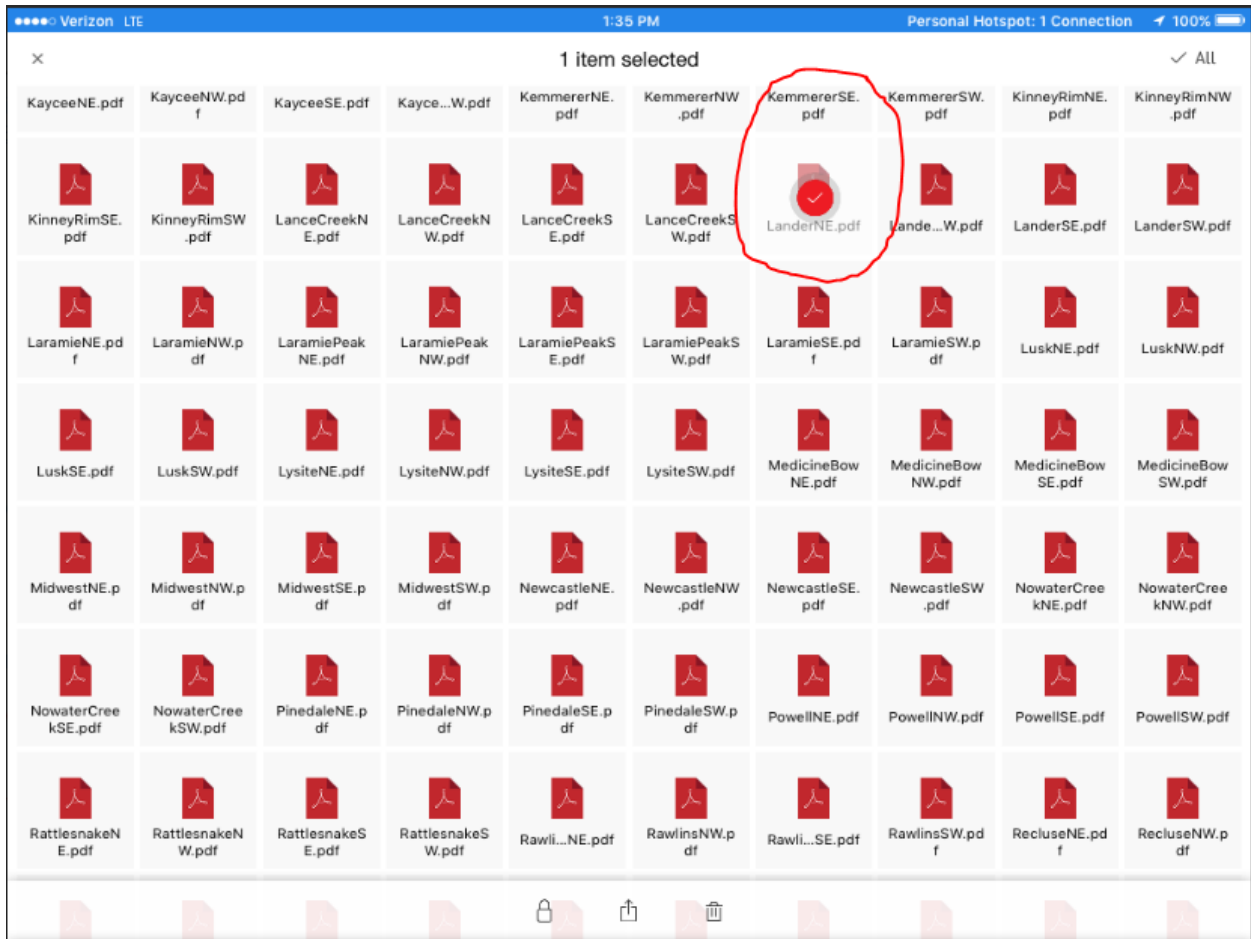


SanDisk iXpand Sync Map Downloading Instructions

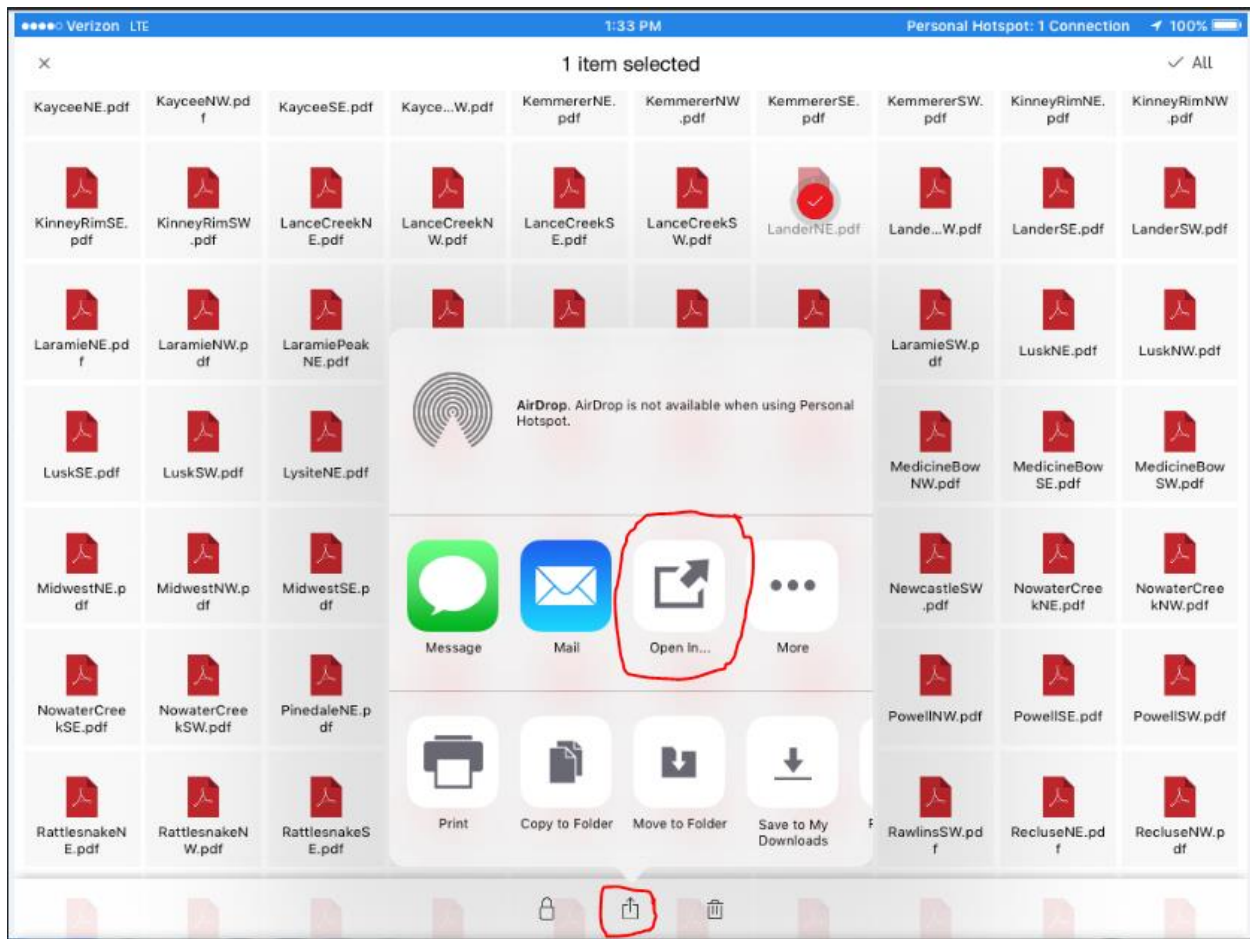
iXpand Flash Drive (Scan Disk external memory for iPad/iPhone) - Requires the San Disk iXpand Sync App. 64GB will provide external storage to hold all the BLM-WY Fire Operations Maps (1:24000 quality maps with roads, ownership, Township/Range, Lat/Long, and Sage Grouse Layers. Total size of statewide map set app 2GB)

Instructions for downloading the BLM-WY Fire Ops Map Set from a SanDisk iPad compatible thumb drive.

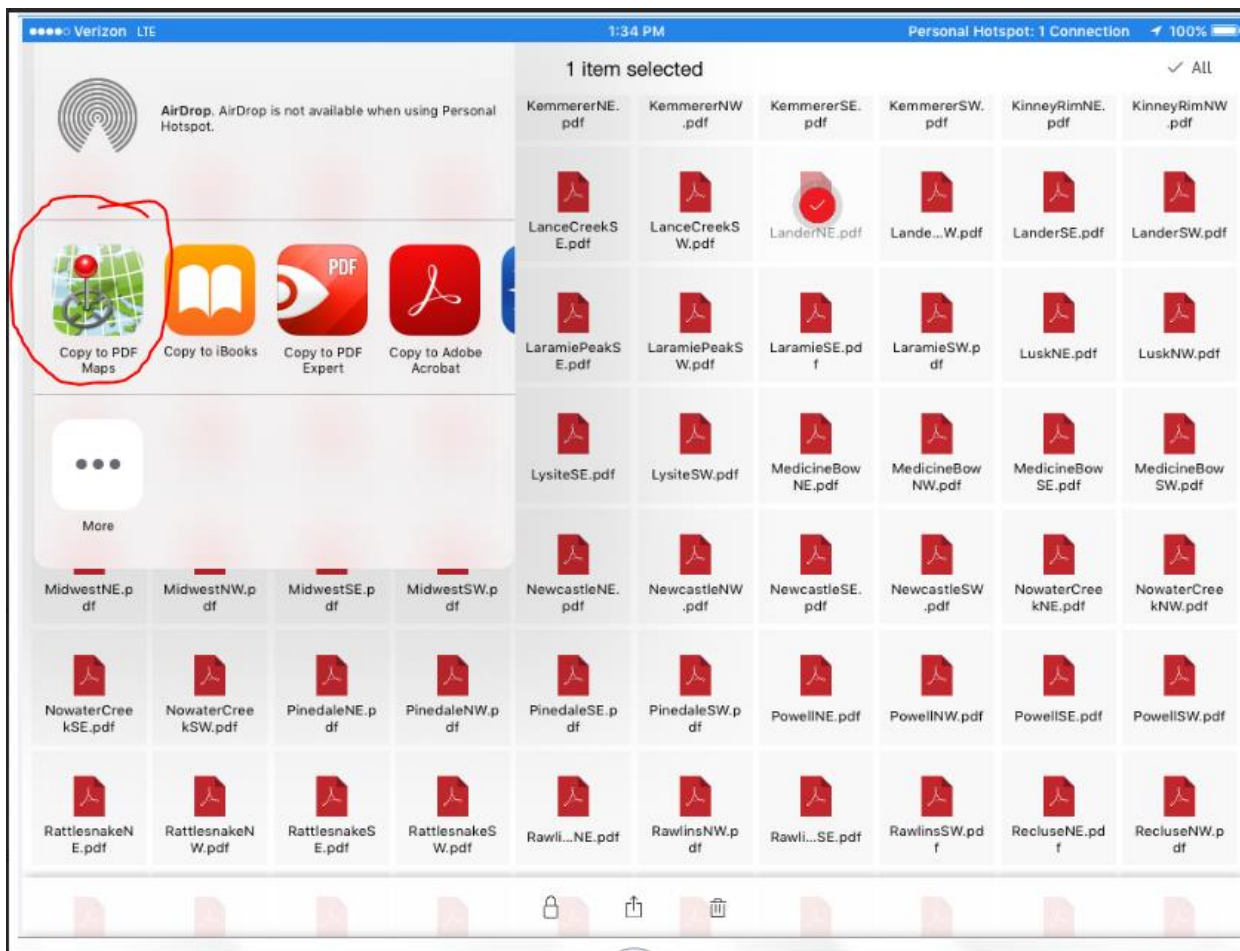
1. Open the SanDisk iXpand Sync App.
2. Select a single map (it only works one map at a time unfortunately).



3. Press the "share" icon and select "Open In"



4. It usually takes a while for it to come up, but when this menu finally does, select "Copy to PDF Maps"



5. Your iPad will open PDF Maps and begin downloading the selected map.